

From The Junior High Office

PHONE NUMBERS/RESIDENCES/EMAIL ADDRESSES: It is essential that our office has current phone numbers, home residence, and email information in case of an emergency. If you have any changes, please inform the JH office ASAP at (345-6940 press #2). You can also contact Mrs. Metcalf and Mrs. Sughrue by email at jmetcalf@mccookbison.org and ksughrue@mccookbison.org.

YOU CAN FIND SCHOOL ACTIVITIES ON OUR JH WEBSITE CALENDAR: mccookbison.org, Click on "schools" find the junior high tab, and scroll down to see the information.

PARENTS: Activities that take place in the MJH gym are live-streamed on McCook Public School YouTube <https://www.youtube.com/c/McCookPublicSchools/videos>. If you cannot attend and would like to watch, log in to the above website. We encourage you to check out the previous activities.

UPCOMING EVENTS:

OCTOBER 3 - PICTURE RETAKES

OCTOBER 4 - PARENT TEACHER CONFERENCES WITH 2:00 DISMISSAL (2:30 TO 8:00 P.M.)

OCTOBER 5 - NO SCHOOL/PTC

OCTOBER 6 - NO SCHOOL/PTC 8:00 A.M. TO 11:00 A.M.

OCTOBER 20 - JH DANCE FROM 7 - 10 P.M., \$5 ENTRY FEE.

REMINDER THAT EVERY WEDNESDAY IS A 2:00 DISMISSAL.

A REMINDER TO PARENTS AND STUDENTS WHO RECEIVE FREE OR REDUCED MEALS, ANY SECOND BREAKFAST OR LUNCH IS CHARGED AT FULL PRICE TO THE STUDENT'S LUNCH ACCOUNT. FOOD SERVICE DOES NOT HAVE A TRACKING SYSTEM TO MONITOR SECOND MEALS.

Parents, if you would like to donate time on a regular basis to help supervise the media center/computer labs or noon duty, please see Mr. Lyons for details.

**STUDENT OF THE MONTH
6TH GRADE
CONGRATULATIONS!**



**VANIA
RODRIGUEZ HERNANDEZ**



**BEAU
BEDNAR**

**STUDENT OF THE MONTH
7TH GRADE
CONGRATULATIONS!**



**ERIN
MULLEN**



**COEN
GREENLEE**

**STUDENT OF THE MONTH
8TH GRADE
CONGRATULATIONS!**



**HANNAH
RALSTON**



**KOLTEN
PEARSON**



MJH Library Notes

Fall, 2023



Did you know...

Our fine Nebraska state has made searchable databases for our school students. Students can very quickly find reliable, relevant information regarding a wide range of research topics...

Along with MY FAVORITE book finder called NOVELIST K-8 Plus!

The password provides elementary and middle school students with access to a selection of NebraskaAccess databases customized to support elementary/middle school research.

Elementary/Middle School Databases access page: <https://nebraskaccess.nebraska.gov/em/>

NebraskaAccess password: em1867kites

NebraskaAccess

DatabasesWebsitesAboutHelp

Search and browse individual databases selected and customized for elementary and middle school students.

Primary Search

Popular elementary school magazines and reference sources covering a broad range of subjects. ⓘ

Middle Search Plus

Popular middle school magazines and reference sources covering a broad range of subjects. ⓘ

Funk & Wagnalls Encyclopedia

General information on more than 25,000 topics. ⓘ

Novelist K-8 Plus

Find a good book to read. ⓘ

Biography Reference Bank

Information on important people from past to present, including musicians, athletes, and politicians. ⓘ

Biography Reference Center

Information on important people to search or browse by name, job, and more. ⓘ

MyHeritage Library Edition

Research your family or famous people from Nebraska and elsewhere. ⓘ

NSCAS 2024 TESTING

Parents/Guardians,

Although it might be a little early to start thinking about state assessments, we realize that the timing of state testing coincides with ski trips and spring vacations. Generally, testing occurs in the late part of March and the month of April.

Thank you for your cooperation in helping your student have a successful year!

1ST QUARTER JUNIOR BISON AWARD 2023/24

This award can go to any student. Criteria include but are not limited to top academic achievement, improvement in academics, good behavior, being a positive leader, having a good attitude, improvement in attitude, or doing something good that a faculty member notices. Congratulations!

6TH GRADE

RINLEE BLOMSTEDT
DEIKAN CLAPP
MAXIMILIANO ESPARZA
JOSE ESTRADA-AMADO
XANDER GALARNEAU
KYNLEE MILLER
ELLA MINER
KAIDEN OTTER
COOPER RUPP
REAGAN SCHILLING
STEFAN SEYBOLD
ISAAC SNYDER
MADISYNN STARK
MATTHEW TAYLOR
GAGE TILLER
AICHA ZALUD

7TH GRADE

LETICE BRIDGES
DARA CHESSMORE
WALKER COLEMAN
MAIVON GALLEGOS
ZOE KINNE-GARCIA
BAILEY KOLBO
LEO MARTIN RAMIREZ
ERIN MULLEN
ABIGAIL PORTER
MIDNA SANTOLERI
EMMA SHELDON

8TH GRADE

CONNER ALLEN
KARAGYNN BROWN
CAYLEE CONOUR
RYLAN CUSTARD
ISMAEL GOMEZ
GRIMALDO
ELLIE HAVLICEK
KEATON LOOP
AIMEE MARQUEZ-
GAMBOA
LIAM POWERS
HANNAH RALSTON
MARIA RODRIGUEZ
HERNANDEZ
STEVEN TAYLOR
KRAYTEN URESTE
WARREN WITT

MOST IMPROVED

These students were in the top 5 who improved their percentile composite score in Aimsweb reading from Fall 2022 to Fall 2023. Congratulations!



Back row L to R: Ali Sellers, Hope Cacy, Brynn Gross, Emma Harris, Macy Myers-Grindle, Tristan Brown, Landen Mosley. **Middle row L to R:** Vania Rodriguez Hernandez, Deikan Clapp, Adelyn Meyer, Katelyn McKillip, Abigail Porter, Chanc Leibbrandt. **Front row L to R:** Stefan Seybold, Ayden Peterson, Kylar Kinne, Swayze Ward, Zoey Braun.

October 2023

McCook Jr High
McCook October 2023 K-12 **Breakfast**

02 Breakfast Entree Mini Pancakes Fruit 100% Orange Juice Chilled Fruit Milk 1% Milk Skim Milk Chocolate Milk	03 Breakfast Entree Egg and Cheese Breakfast Sandwich Fruit Chilled Fruit 100% Orange Juice Milk 1% Milk Chocolate Milk Skim Milk	04 Breakfast Entree Donut Fruit 100% Grape Juice Fresh Fruit Milk 1% Milk Chocolate Milk Skim Milk	05 No School	06 No School
09 Breakfast Entree Mini Waffles Fruit Chilled Fruit 100% Apple Juice Milk 1% Milk Chocolate Milk Skim Milk	10 Breakfast Entree Egg and Cheese Biscuit Fruit Fresh Fruit 100% Grape Juice Milk 1% Milk Chocolate Milk Skim Milk	11 Breakfast Entree Donut Fruit 100% Orange Juice Chilled Fruit Milk 1% Milk Chocolate Milk Skim Milk	12 Breakfast Entree Breakfast Taco Fruit 100% Grape Juice Fresh Fruit Milk 1% Milk Chocolate Milk Skim Milk	13 Breakfast Entree Sausage Pancake on a Stick Fruit 100% Orange Juice Chilled Fruit Milk 1% Milk Chocolate Milk Skim Milk Condiments Syrup PC
16 Breakfast Entree Mini Cinnis Fruit 100% Grape Juice Fresh Fruit Milk 1% Milk Chocolate Milk Skim Milk	17 Breakfast Entree Egg, Bacon, and Cheese Bagel Fruit 100% Orange Juice Chilled Fruit Milk 1% Milk Chocolate Milk Skim Milk	18 Breakfast Entree Donut Fruit 100% Orange Pineapple Juice Fresh Fruit Grains Toast w. Margarine and Jelly Milk 1% Milk Chocolate Milk Skim Milk Condiments Jelly PC	19 Breakfast Entree Fruit and Yogurt Parfait Fruit 100% Orange Juice Chilled Fruit Grains Cinnamon Toast Milk 1% Milk Chocolate Milk Skim Milk	20 Breakfast Entree Sausage Biscuit Fruit 100% Grape Juice Fresh Fruit Milk 1% Milk Chocolate Milk Skim Milk

23	24	25	26	27
Breakfast Entree Mini Waffles Fruit Chilled Fruit 100% Orange Juice Milk 1% Milk Chocolate Milk Skim Milk	Breakfast Entree Fruit Muffin Fruit 100% Grape Juice Fresh Fruit Milk 1% Milk Chocolate Milk Skim Milk Misc. Yogurt	Breakfast Entree Donut Fruit 100% Grape Juice Fresh Fruit Milk 1% Milk Chocolate Milk Skim Milk	Breakfast Entree Sausage Pancake on a Stick Fruit 100% Orange Juice Chilled Fruit Milk 1% Milk Chocolate Milk Skim Milk	Breakfast Entree Mini Bagels Fruit 100% Orange Juice Chilled Fruit Milk 1% Milk Chocolate Milk Skim Milk
30	31			
Breakfast Entree Fruit and Yogurt Parfait Fruit 100% Fruit Punch Juice Fresh Fruit Grains Muffin Square Milk 1% Milk Chocolate Milk Skim Milk	Breakfast Entree Egg and Cheese Breakfast Sandwich Fruit Chilled Fruit 100% Orange Juice Milk 1% Milk Chocolate Milk Skim Milk			

In accordance with federal civil rights law and U.S. Department of Agriculture (USDA) civil rights regulations and policies, this institution is prohibited from discriminating on the basis of race, color, national origin, sex (including gender identity and sexual orientation), disability, age, or reprisal or retaliation for prior civil rights activity.

Program information may be made available in languages other than English. Persons with disabilities who require alternative means of communication to obtain program information (e.g., Braille, large print, audiotape, American Sign Language), should contact the responsible state or local agency that administers the program or USDA's TARGET Center at (202) 720-2600 (voice and TTY) or contact USDA through the Federal Relay Service at (800) 877-8339.

To file a program discrimination complaint, a Complainant should complete a Form AD-3027, USDA Program Discrimination Complaint Form which can be obtained online at:

<https://www.usda.gov/sites/default/files/documents/USDA-OASCR%20P-Complaint-Form-0508-0002-508-11-28-17Fax2Mail.pdf>, from any USDA office, by calling (866) 632-9992, or by writing a letter addressed to USDA. The letter must contain the complainant's name, address, telephone number, and a written description of the alleged discriminatory action in sufficient detail to inform the Assistant Secretary for Civil Rights (ASCR) about the nature and date of an alleged civil rights violation. The completed AD-3027 form or letter must be submitted to USDA by:

- **mail:** U.S. Department of Agriculture Office of the Assistant Secretary for Civil Rights 1400 Independence Avenue, SW Washington, D.C. 20250-9410; or
- **fax:** (833) 256-1665 or (202) 690-7442; or
- **email:** program.intake@usda.gov

This institution is an equal opportunity provider.

October 2023

McCook Jr High
October 2023 **Lunch**

<p>02</p> <p>Lunch Entree Corn Dog Big Mack Salad WowButter and Jelly Sandwich Vegetables Fresh Garden Salad Corn Fruit Fresh Fruit Chilled Fruit Grains Italian Bread Milk 1% Milk Skim Milk Chocolate Milk Misc. Yogurt Condiments Ketchup</p>	<p>03</p> <p>Lunch Entree Hamburger Mac N Cheese BLTE Salad WowButter and Jelly Sandwich Vegetables Fresh Garden Salad Cowboy Beans Fruit Fresh Fruit Chilled Fruit Grains Italian Bread Milk Chocolate Milk 1% Milk Skim Milk Misc. Mozzarella Cheese Stick Condiments Sour Cream Salsa Green Onions Tomatoes Jalapenos Lettuce Mustard Mayonnaise</p>	<p>04</p> <p>Lunch Entree Chicken Patty Watermelon Salad WowButter and Jelly Sandwich Vegetables Mashed Potatoes Glazed Carrots Fruit Chilled Fruit Fresh Fruit Grains Hot Rolls Milk 1% Milk Skim Milk Chocolate Milk Misc. Colby Jack Cheese Stick Condiments Gravy Ketchup BBQ Sauce Brown Gravy</p>	<p>05</p> <p>No School</p>	<p>06</p> <p>No School</p>
<p>09</p> <p>Lunch Entree Chicken Rotini Pasta Chicken Bacon Ranch Salad WowButter and Jelly Sandwich Vegetables Fresh Garden Salad Cheesy Cauliflower Popcorn Fruit Fresh Fruit Chilled Fruit Grains Italian Bread Milk Chocolate Milk 1% Milk Skim Milk Misc. Colby Jack Cheese Stick</p>	<p>10</p> <p>Lunch Entree Cheeseburger Tacos BLTE Salad WowButter and Jelly Sandwich Vegetables Baked Beans Fresh Garden Salad Fruit Fresh Fruit Chilled Fruit Grains Italian Bread Milk 1% Milk Skim Milk Chocolate Milk Misc. Mozzarella Cheese Stick</p>	<p>11</p> <p>Lunch Entree Chicken Patty Watermelon Salad WowButter and Jelly Sandwich Vegetables Mashed Potatoes Corn Fruit Fresh Fruit Chilled Fruit Grains Hot Rolls Milk 1% Milk Skim Milk Chocolate Milk Misc. Yogurt Condiments Gravy BBQ Sauce Ketchup</p>	<p>12</p> <p>Lunch Entree Ham and Cheese Calzone Chef Salad WowButter and Jelly Sandwich Vegetables Fresh Garden Salad French Fries Fruit Fresh Fruit Chilled Fruit Grains Cornbread Milk 1% Milk Skim Milk Chocolate Milk Misc. Colby Jack Cheese Stick Condiments Ketchup Sour Cream Green Onions</p>	<p>13</p> <p>Lunch Entree Pepperoni Pizza Popcorn Chicken Salad WowButter and Jelly Sandwich Vegetables Fresh Garden Salad Baby Carrots Fruit Fresh Fruit Chilled Fruit Grains Biscuit Milk 1% Milk Skim Milk Chocolate Milk Misc. Yogurt Condiments Ranch Dressing Ketchup PC BBQ Sauce Sour Cream Salsa Jalapenos</p>

<p>16</p> <p>Lunch Entree Meatball Sub Caesar Salad WowButter and Jelly Sandwich Vegetables Fresh Garden Salad Steamed Broccoli Fruit Fresh Fruit Chilled Fruit Grains Italian Bread Milk Skim Milk 1% Milk Chocolate Milk Misc. Colby Jack Cheese Stick</p>	<p>17</p> <p>Lunch Entree Cheese Enchiladas Taco Salad WowButter and Jelly Sandwich With Colby Jack Cheese Stick Vegetables Fresh Garden Salad Fruit Refried Beans Fruit Fresh Fruit Chilled Fruit Grains Italian Bread Milk 1% Milk Chocolate Milk Skim Milk Condiments Sour Cream Salsa Jalapenos</p>	<p>18</p> <p>Lunch Entree Chicken Patty Chicken Bacon Ranch Salad WowButter and Jelly Sandwich Vegetables Mashed Potatoes Green Beans Fruit Fresh Fruit Chilled Fruit Grains Hot Rolls Milk 1% Milk Chocolate Milk Skim Milk Misc. Yogurt Condiments Ketchup Gravy BBQ Sauce Mayonnaise Mustard Lettuce Tomatoes Pickles Onions</p>	<p>19</p> <p>Lunch Entree Chicken Parmesan Pasta BLTE Salad WowButter and Jelly Sandwich Vegetables Fresh Garden Salad French Fries Fruit Fresh Fruit Chilled Fruit Grains Italian Bread Milk 1% Milk Chocolate Milk Skim Milk Misc. Mozzarella Cheese Stick Condiments Ketchup Sour Cream Salsa Lettuce Tomatoes Jalapenos</p>	<p>20</p> <p>Lunch Entree Nardone's Pizza Big Mack Salad WowButter and Jelly Sandwich Vegetables Fresh Garden Salad Glazed Carrots Fruit Fresh Fruit Chilled Fruit Grains Fruit Muffin Milk 1% Milk Chocolate Milk Skim Milk Misc. Yogurt</p>
<p>23</p> <p>Lunch Entree Sweet and Sour Chicken w. Rice Watermelon Salad WowButter and Jelly Sandwich Vegetables Fresh Garden Salad Corn Fruit Chilled Fruit Fresh Fruit Grains Italian Bread Milk 1% Milk Chocolate Milk Skim Milk Misc. Yogurt Condiments Mayonnaise Mustard Lettuce Tomatoes Onions</p>	<p>24</p> <p>Lunch Entree Chicken Nachos w. White Queso Taco Salad WowButter and Jelly Sandwich Vegetables Fresh Garden Salad Refried Beans Fruit Chilled Fruit Fresh Fruit Grains Cornbread Milk Skim Milk Chocolate Milk 1% Milk Misc. Colby Jack Cheese Stick Condiments Sour Cream Salsa Jalapenos Green Onions Tomatoes</p>	<p>25</p> <p>Lunch Entree Chicken Patty BLTE Salad WowButter and Jelly Sandwich Vegetables Mashed Potatoes Glazed Carrots Fruit Fresh Fruit Chilled Fruit Grains Hot Rolls Milk 1% Milk Chocolate Milk Skim Milk Misc. Yogurt Condiments Gravy Ketchup BBQ Sauce</p>	<p>26</p> <p>Lunch Entree Cheeseburger Italian Chef Salad WowButter and Jelly Sandwich Vegetables Fresh Garden Salad Tater Tots Fruit Fresh Fruit Chilled Fruit Grains Italian Bread Milk 1% Milk Chocolate Milk Skim Milk Misc. Yogurt Condiments Mustard Onions Pickles Tomatoes Syrup PC Ketchup Lettuce Mayonnaise</p>	<p>27</p> <p>Lunch Entree Nardone's Pizza Popcorn Chicken Salad WowButter and Jelly Sandwich Vegetables Fresh Garden Salad Fresh Broccoli Fruit Fresh Fruit Chilled Fruit Grains Italian Bread Milk 1% Milk Chocolate Milk Skim Milk Misc. Colby Jack Cheese Stick Condiments Mayonnaise Mustard Lettuce Tomatoes Onions Ranch Dressing</p>

30	31
Lunch Entree	Lunch Entree
Chicken Alfredo	Hot Dog
Chef Salad	Big Mack Salad
WowButter and Jelly Sandwich	WowButter and Jelly Sandwich
With	Vegetables
Cobby Jack Cheese Stick	Fresh Garden Salad
Vegetables	Texas Pintos
Fresh Garden Salad	Fruit
French Fries	Fresh Fruit
Fruit	Chilled Fruit
Chilled Fruit	Grains
Fresh Fruit	Italian Bread
Grains	Milk
Italian Bread	1% Milk
Milk	Chocolate Milk
1% Milk	Skim Milk
Chocolate Milk	Misc.
Skim Milk	Yogurt
	Condiments
	Ketchup
	Mustard
	Picche Relish

In accordance with federal civil rights law and U.S. Department of Agriculture (USDA) civil rights regulations and policies, this institution is prohibited from discriminating on the basis of race, color, national origin, sex (including gender identity and sexual orientation), disability, age, or reprisal or retaliation for prior civil rights activity.

Program information may be made available in languages other than English. Persons with disabilities who require alternative means of communication to obtain program information (e.g., Braille, large print, audiotope, American Sign Language), should contact the responsible state or local agency that administers the program or USDA's TARGET Center at (202) 720-2500 (voice and TTY) or contact USDA through the Federal Relay Service at (800) 877-8339.

To file a program discrimination complaint, a Complainant should complete a Form AD-3027, USDA Program Discrimination Complaint Form which can be obtained online at:

<https://www.usda.gov/sites/default/files/documents/USDA-CASCR%20P-Complaint-Form-0508-0002-506-11-28-17FaxMail.pdf>, from any USDA office, by calling (866) 632-9992, or by writing a letter addressed to USDA. The letter must contain the complainant's name, address, telephone number, and a written description of the alleged discriminatory action in sufficient detail to inform the Assistant Secretary for Civil Rights (ASCR) about the nature and date of an alleged civil rights violation. The completed AD-3027 form or letter must be submitted to USDA by:

- **mail:** U.S. Department of Agriculture Office of the Assistant Secretary for Civil Rights 1400 Independence Avenue, SW Washington, D.C. 20250-9410; or
- **fax:** (833) 256-1665 or (202) 690-7442; or
- **email:** program.intake@usda.gov

This institution is an equal opportunity provider.

McCook Public Schools

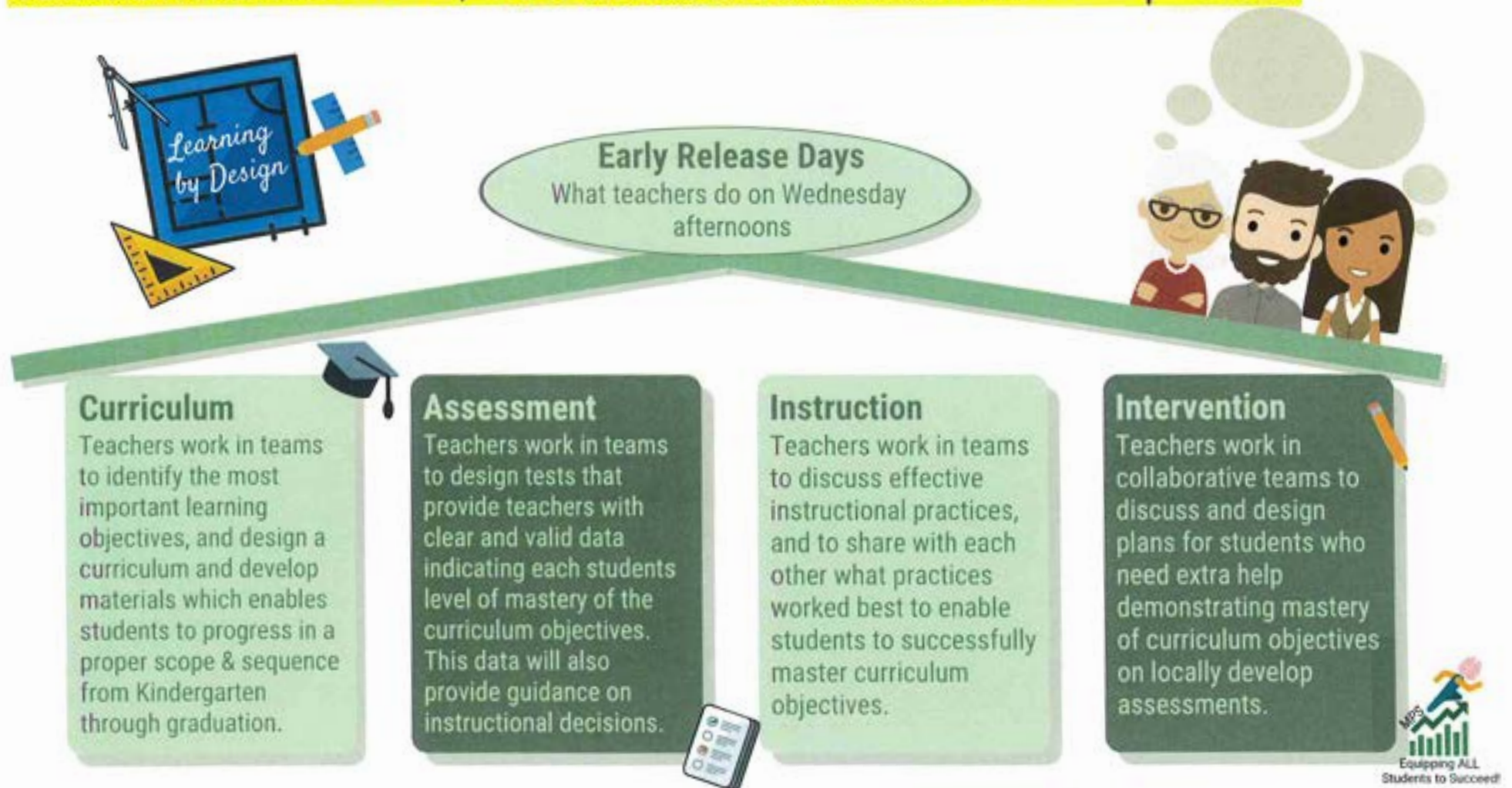
Equipping all students to succeed in a complex global society.



Every public school district in the state of Nebraska has a school improvement goal, and each district has developed a plan for how the District is going to meet their goal. These goals focus educational staff on improving learning for all students.

McCook Public Schools District Wide Improvement Goal

On a weekly basis, teachers will work in collaborative teams to discuss and design high quality curriculum and assessments, and to discuss and share best instructional practices.





STANDARD RESPONSE PROTOCOL

INFORMATION FOR PARENTS AND GUARDIANS

Our school has adopted The "I Love U Guys" Foundation's Standard Response Protocol (SRP). Students and staff will be training, practicing, and drilling the protocol.

COMMON LANGUAGE

The Standard Response Protocol (SRP) is based on an all-hazards approach as opposed to individual scenarios. Like the Incident Command System (ICS), SRP utilizes clear common language while allowing for flexibility in protocol.

The premise is simple - there are five specific actions that can be performed during an incident. When communicating these, the action is labeled with a "Term of Art" and is then followed by a "Directive." Execution of the action is performed by active participants, including students, staff, teachers and first responders. The SRP is based on the following actions: Hold, Secure, Lockdown, Evacuate, and Shelter.

HOLD

"In Your Classroom or Area"

Students are trained to:

- Clear the hallways and remain in their area or room until the "All Clear" is announced
- Do business as usual

Adults and staff are trained to:

- Close and lock the door
- Account for students and adults
- Do business as usual



SECURE

"Get Inside. Lock outside doors"

Students are trained to:

- Return to inside of building
- Do business as usual

Adults and staff are trained to:

- Bring everyone indoors
- Lock the outside doors
- Increase situational awareness
- Account for students and adults
- Do business as usual



LOCKDOWN

"Locks, Lights, Out of Sight"

Students are trained to:

- Move away from sight
- Maintain silence
- Do not open the door

Adults and staff are trained to:

- Recover students from hallway if possible
- Lock the classroom door
- Turn out the lights
- Move away from sight
- Maintain silence
- Do not open the door
- Prepare to evade or defend



EVACUATE

"To a Location"

Students are trained to:

- Leave stuff behind if required to
- If possible, bring their phone
- Follow instructions

Adults and staff are trained to:

- Bring roll sheet and Go Bag (unless instructed not to bring anything with them, dependent on reason for evacuation.)
- Lead students to Evacuation location
- Account for students and adults
- Report injuries or problems using Red Card/Green Card method.



SHELTER

"State Hazard and Safety Strategy"

Hazards might include:

- Tornado
- Hazmat
- Earthquake
- Tsunami

Safety Strategies might include:

- Evacuate to shelter area
- Seal the room
- Drop, cover and hold
- Get to high ground

Students are trained in:

- Appropriate Hazards and Safety Strategies

Adults and staff are trained in:

- Appropriate Hazards and Safety Strategies
- Accounting for students and adults
- Report injuries or problems using Red Card/Green Card method.





STANDARD RESPONSE PROTOCOL

PARENT GUIDANCE

In the event of a live incident, parents may have questions about their role.

SECURE

"Get Inside. Lock outside doors"



Secure is called when there is something dangerous outside of the building. Students and staff are brought into the building and the outside doors will be locked. The school might display the Building is Secured poster on entry doors or nearby windows. Inside, it will be business as usual.

SHOULD PARENTS COME TO THE SCHOOL DURING A SECURE EVENT?

Probably not. Every effort is made to conduct classes as normal during a secure event. Additionally, parents may be asked to stay outside during a Secure event.

WHAT IF PARENTS NEED TO PICK UP THEIR STUDENT?

Depending on the situation, it may not be safe to release the student. As the situation evolves, Secure might change to a Monitored Entry and/or Controlled Release.

WILL PARENTS BE NOTIFIED WHEN A SCHOOL GOES INTO SECURE?

When a secure event is brief or the hazard is non-violent, like a wild animal on the playground, there may not be a need to notify parents while the Secure is in place.

With longer or more dangerous events, the school should notify parents that the school has increased their security.

LOCKDOWN

"Locks, Lights, Out of Sight"



A Lockdown is called when there is something dangerous inside of the building. Students and staff are trained to enter or remain in a room that can be locked, and maintain silence.

A Lockdown is only initiated when there is an active threat inside or very close to the building.

SHOULD PARENTS COME TO THE SCHOOL DURING A LOCKDOWN?

The natural inclination for parents is to go to the school during a Lockdown. Understandable, but perhaps problematic. If there is a threat inside the building, law enforcement will be responding. It is unlikely that parents will be granted access to the building or even the campus. If parents are already in the school, they will be instructed to Lockdown as well.

SHOULD PARENTS TEXT THEIR STUDENTS?

The school recognizes the importance of communication between parents and students during a Lockdown event. Parents should be aware though, during the initial period of a Lockdown, it may not be safe for students to text their parents. As the situation resolves, students may be asked to update their parents on a regular basis.

In some cases, students may be evacuated and transported off-site for a student-parent reunification.

WHAT ABOUT UNANNOUNCED DRILLS?

The school may conduct unscheduled drills, however it is highly discouraged to conduct one without announcing that it as a drill. That's called an unannounced drill and can cause undue concern and stress.

Parents should recognize that the school will always inform students that it is a drill during the initial announcement.

It's important to differentiate between a **drill** and an exercise. A drill is used to create the "Muscle Memory" associated with a practiced action. There is no simulation of an event; this is simply performing the action. An exercise simulates an actual event to test the capacity of personnel and equipment.

CAN PARENTS OBSERVE OR PARTICIPATE IN THE DRILLS?

The school welcomes parents who wish to observe or participate in drills.





STANDARD™ REUNIFICATION METHOD

STUDENT/PARENT REUNIFICATION

Circumstances may occur at the school that require parents to pick up their students in a formalized, controlled release. This process is called a Reunification and may be necessary due to weather, a power outage, hazmat or if a crisis occurs at the school. The Standard Reunification Method is a protocol that makes this process more predictable and less chaotic for all involved.

Because a reunification is not a typical end of school day event, a reunification may occur at a different location than the school a student attends. If this location is another school, then those students may be subject to a controlled release as well.

NOTIFICATION

Parents may be notified in a number of ways. The school or district may use its broadcast phone or text message system. In some cases, students may be asked to send a text message to their parents. A reunification text message from a student may look something like this: *"The school has closed, please pick me up at 3:25 at the main entrance. Bring your ID."*

PARENT/GUARDIAN EXPECTATIONS

If a parent or guardian is notified that a reunification is needed, there are some expectations that parents or guardians should be aware of. First, bring identification. That will streamline things during reunification. Second, be patient. Reunification is a process that protects both the safety of the student and provides for an accountable change of custody from the school to a recognized custodial parent or guardian.

WHAT IF A PARENT CAN'T PICK-UP THEIR STUDENT?

When a parent can't immediately go to the reunification site, students will only be released to individuals previously identified as a student's emergency contact. Otherwise, the school will hold students until parents can pick up their student.

WHAT IF THE STUDENT DROVE TO SCHOOL?

There may be instances where a student may not be allowed to remove a vehicle from the parking lot. In this case, parents are advised to recover the student. In some circumstances, high school students may be released on their own.

Reunification Information Parent Reunification
Have photo identification out and ready to show school district personnel.

Student Name _____
Student Grade _____ Student Cell Phone Number _____
Name of person picking up student _____
Signature _____
Phone number of person picking up student _____
Relationship to student being picked up _____
Photo identification matches name of person picking up student? Y or N _____

Parent completion:
First Student Name Again _____
Student Grade _____ Student Birthday _____
School personnel completes upon release of student _____

HOW IT WORKS

For students, the school asks that students be orderly and quiet while waiting. Students may be asked to text a message to their parents or guardians. Students are also asked not to send other text messages either in or out of the school or reunification area. Keeping the cellular network usage at a minimum may be important during a reunification.

REUNIFICATION CARDS

For parents, there are a couple of steps. If a parent is driving to the school, greater awareness of traffic and emergency vehicles is advised. Parents should park where indicated and not abandon vehicles. Parents are asked to go to the Reunification "Check In" area and form lines based on the first letter of their student's last name. While in line, parents are asked to fill out a reunification card. This card is perforated and will be separated during the process. Some of the same information is repeated on both the top and separated bottom of the card. Parents are asked to complete all parts of the card.

In the case of multiple students being reunified, a separate card for each student needs to be completed.

BRING ID TO CHECK IN

During check in, identification and custody rights are confirmed. The card is separated and the bottom half given back to the parent.

From the "Check In" area parents are directed to the "Reunification" area. There, a runner will take the bottom half of the card and take it to the Student Assembly Area to recover the student or students.

Parents should be aware that in some cases, they may be invited into the building for further information.

INTERVIEWS AND COUNSELING

In some cases, parents may be advised that a law enforcement investigation is underway and may be advised that interviews are necessary. In extreme cases, parents may be pulled aside for emergency or medical information.





STANDARD RESPONSE PROTOCOL

INFORMACIÓN PARA PADRES/ MADRES DE FAMILIA Y TUTORES/AS LEGALES

Nuestra escuela ha adoptado el Protocolo de Respuesta Estándar (SRP por su sigla en inglés) desarrollado por "I Love U Guys" Foundation. Los/las estudiantes y el personal serán capacitados, practicarán y harán simulacros sobre el protocolo.

LENGUAJE COMÚN

El Protocolo de Respuesta Estándar (SRP por su sigla en inglés) se basa en un método para todo tipo de riesgos en vez de para situaciones particulares. Al igual que el Sistema de Comando de Incidentes (ICS por su sigla en inglés), el protocolo SRP utiliza un lenguaje común claro al mismo tiempo que posibilita la flexibilidad en el protocolo.

La premisa es simple: durante un suceso se pueden activar cinco acciones específicas. Cuando se comunique, la acción usará un "término específico" que irá seguido de una "orden". Los participantes activos, incluidos estudiantes, empleados, docentes y personal de respuesta inmediata llevan a cabo la acción. El protocolo SRP se basa en las siguientes acciones: Hold (esperen), Secure (protejan), Lockdown (acceso bloqueado), Evacuate (evacuen) y Shelter (busquen resguardo).



HOLD! (¡ESPEREN!)

En su salón o área. Despejen los pasillos.

Se capacita a los/las estudiantes en lo siguiente:

- Permanecer en el área hasta que se indique que la situación se ha resuelto
- Continúen con la actividad rutinaria

Se capacita a las personas adultas en lo siguiente:

- Cerrar la puerta y echen la llave
- Contar a los estudiantes y a los adultos
- Continuar con la actividad rutinaria



SECURE! (Lockout) (¡PROTEJAN!)

Vayan adentro. Echen llave a las puertas exteriores.

Se capacita a los/las estudiantes en lo siguiente:

- Regresar adentro

Se capacita a las personas adultas en lo siguiente:

- Llevar a todas las personas adentro
- Echar llave a las puertas exteriores
- Mantener la alerta sobre lo que ocurre en su entorno
- Contar a los estudiantes y a los adultos
- Continuar con la actividad rutinaria



LOCKDOWN! (¡CIERRE DE EMERGENCIA!)

Echen llave, apaguen las luces, escóndanse.

Se capacita a los/las estudiantes en lo siguiente:

- Desplazarse a un lugar donde no se les vea
- Guardar silencio
- No abrir la puerta

Se capacita a las personas adultas en lo siguiente:

- Llevar a las personas en los pasillos a dependencias interiores si es posible hacerlo de forma segura
- Echar llave a las puertas interiores
- Apagar las luces
- Desplázense a un lugar donde no se les vea
- No abrir la puerta
- Guardar silencio
- Contar a los estudiantes y a los adultos
- Prepararse para evadirse o defenderse



EVACUATE! (¡EVACUEN!)

(Es posible que se especifique un lugar determinado)

Se capacita a los/las estudiantes en lo siguiente:

- Evacuar a un lugar determinado
- Llevarse sus teléfonos
- Cuando se proporcionarán instrucciones sobre si deben llevarse o dejar sus pertenencias

Se capacita a las personas adultas en lo siguiente:

- Dirigir la evacuación a un lugar determinado
- Contar a los estudiantes y a los adultos
- Reporte lesiones o problemas usando el método de Tarjeta Roja / Tarjeta Verde



SHELTER! (¡BUSQUEN RESGUARDO!)

Riesgo y estrategia de seguridad.

Los riesgos pueden incluir:

- Tornado

- Materiales peligrosos
- Terremoto
- Tsunami

Las estrategias de seguridad pueden incluir:

- Evacuar a un área resguardada
- Sellar el salón
- Agacharse, cubrirse, agarrarse
- Dirigirse a terreno elevado

Se capacita a los/las estudiantes en lo siguiente:

- Estrategias adecuadas de seguridad y para situaciones de riesgo

Se capacita a las personas adultas en lo siguiente:

- Estrategias adecuadas de seguridad y para situaciones de riesgo
- Contar a los estudiantes y a los adultos
- Reporte de lesiones o problemas usando el método de Tarjeta Roja / Tarjeta Verde



STANDARD RESPONSE PROTOCOL

INDICACIONES PARA LOS PADRES/ MADRES DE FAMILIA

En caso de que se produzca un suceso real, es posible que los padres/madres de familia se pregunten qué papel pueden tener.

SECURE (PROTEJAN)

“Vayan adentro. Echen llave a las puertas exteriores”



La orden de proteger se acciona cuando pasa algo peligroso fuera del edificio. Los/las estudiantes y el personal irán adentro del edificio y se echará la llave a las puertas exteriores. Es posible que la escuela muestre un cartel que indique que el edificio está bajo protección (Building is Secured) en las puertas de entrada o en las ventanas cercanas a la misma. Dentro, se continuará con la actividad rutinaria.

¿Deberían los padres/madres ir a la escuela cuando ocurra una situación de protección?

Probablemente no. Durante una situación de protección se hará todo lo posible para seguir con las clases de forma normal. Además, es posible que se pida a los padres/madres que se queden fuera durante una situación de protección.

¿Qué pasa si los padres/madres tienen que ir a buscar a sus hijos/as?

Según la situación, es posible que dejar salir a los estudiantes suponga un riesgo. Si las circunstancias evolucionan, podría cambiarse la orden de situación de protección a entrada vigilada o salida controlada.

¿Se notificará a los padres/madres cuando se active una situación de protección?

Cuando la situación de protección sea breve o el riesgo de carácter no violento, como por ejemplo un animal silvestre en el patio de recreo, es posible que no sea necesario notificar a los padres/madres mientras la situación de protección se mantenga activada.

En caso de situaciones de mayor duración o peligro, es posible que la escuela haga saber a los padres/madres de familia que se han incrementado las medidas de seguridad.

LOCKDOWN (CIERRE DE EMERGENCIA)

“Echen llave, apaguen las luces, escóndanse”

La orden de poner en marcha un cierre de emergencia se acciona cuando pasa algo peligroso dentro del edificio.

Los estudiantes y el personal han sido instruidos para que accedan o se queden en un salón al que se le pueda echar la llave y permanezcan en silencio.

El cierre de emergencia solo se inicia cuando hay un peligro activo dentro o muy cerca del edificio.

¿Deberían los padres/madres ir a la escuela cuando ocurra un cierre de emergencia?

Durante un cierre de emergencia la inclinación natural de los padres/madres es dirigirse a la escuela. Aunque se entiende perfectamente, puede ser un problema. Si existe un peligro dentro del edificio, las autoridades policiales responderán a la situación. No es probable que se permita a los padres/madres acceder al edificio o ni siquiera al campus escolar. Si un padre o madre de familia ya se encuentra en la escuela, se le pedirá que participe en el cierre de emergencia.

¿Deberían los padres/madres enviar mensajes de texto a sus hijos/as?

La escuela reconoce lo importante que es la comunicación entre los padres/madres y sus hijos/as durante una situación de cierre de emergencia. No obstante, los padres/madres de familia deben saber que durante el periodo inicial de un cierre de emergencia es posible que envíen textos a sus padres/madres sea demasiado arriesgado para los/las estudiantes. Una vez que la situación se resuelva, se le pedirá a los/las estudiantes que comuniquen a sus padres/madres información actualizada de forma regular.

En algunos casos, es posible que se evacue a los/las estudiantes y se les lleve a un lugar fuera de la escuela para que se reúnan con los padres y madres.

¿Se harán simulacros no anunciados?

Es posible que la escuela realice simulacros no programados, no obstante es sumamente desaconsejable realizar simulacros sin aviso previo. Estos se conocen como simulacros no anunciados y pueden causar preocupación y estrés innecesarios.



Los padres/madres de familia deben saber que la escuela informará siempre de que se trata de un simulacro durante el aviso inicial.

Es importante explicar la diferencia entre un simulacro y un ejercicio. Un simulacro se usa para crear “memoria muscular” asociada con una acción practicada. No se hacen simulaciones de situaciones, solo se realizan las acciones. Un ejercicio simula una situación actual para probar la

capacidad del personal y el equipo.

¿Pueden los padres/madres observar o participar en los simulacros?

La escuela no tiene ningún inconveniente en permitir a los padres/madres que lo deseen observar o participar en los simulacros.